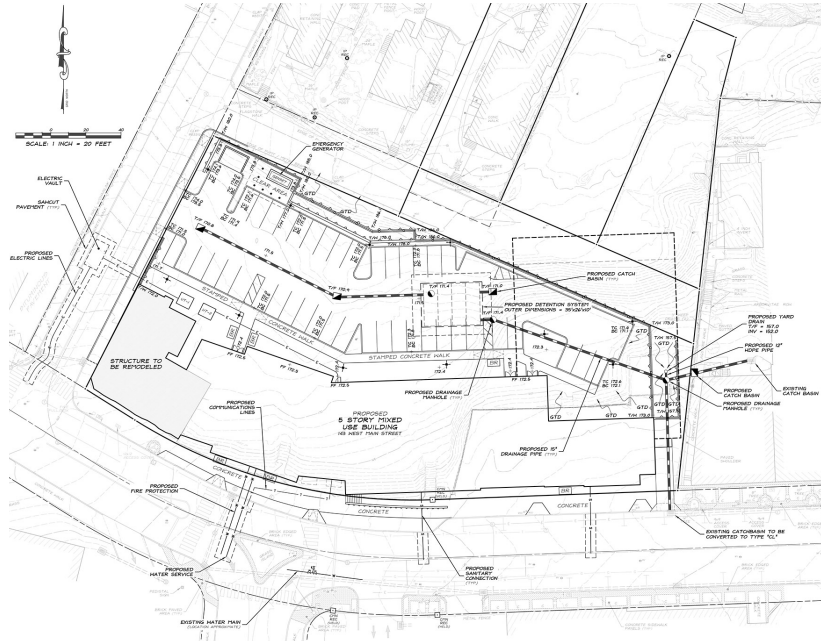


143 WEST MAIN STREET

MERIDEN, CONNECTICUT



CLIENT:	LANDMARK ARCHITECTS (MERIDEN HOUSING AUTHORITY)
CONTACT INFORMATION:	PAUL PIZZO 203.468.2441
DATE OF COMPLETION:	DESIGN IN PROGRESS
PROJECT COST:	TO BE DETERMINED
SERVICES PROVIDED:	CONCEPTUAL PLANNING BOUNDARY & TOPOGRAPHIC SURVEY DRAINAGE DESIGN SITE AND CIVIL DESIGN HYDROLOGIC & HYDRAULIC ANALYSIS UTILITY DESIGN EROSION AND SEDIMENT CONTROL CONSTRUCTION LAYOUT PERMITTING

Stadia Engineering Associates, Inc. provided design support for a proposed multi-purpose, 95,000 square foot building on West Main Street. The building will include 51 apartments, retail shops and a 450 seat theater. The project will be in the forefront for sustainability with geothermal wells for heating and cooling, photovoltaic panels and a green roof.

Scope of services performed include boundary and topographic survey, site / civil design including parking layout, drainage and site utilities as well as coordination with other City infrastructure projects in the immediate vicinity.

